



MONTHLY MEMBERSHIP PROGRESS REPORT

District 1 G

Results as of: 05/31/2019

GMT: STEVE ANTON

LOCATION ILLINOIS

GMT CA

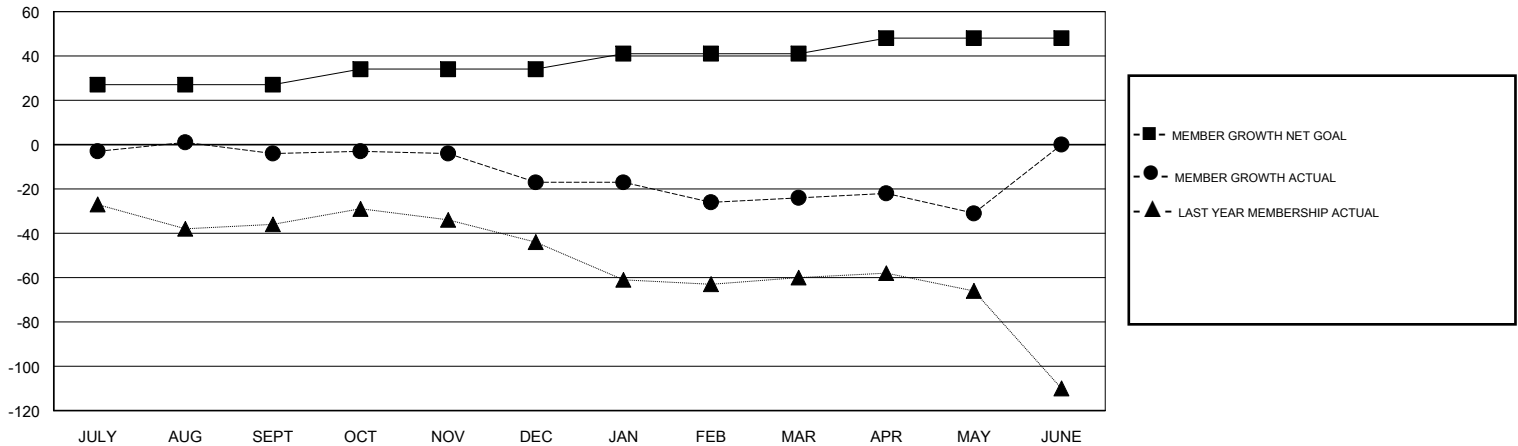
Clubs			
RESULTS FOR 2018-2019			
QUARTER	NEW CLUB GOAL	NEW CLUBS	DROPPED CLUBS
JULY/AUG/SEPT	1	0	0
OCT/NOV/DEC	0	0	0
JAN/FEB/MAR	0	0	0
APR/MAY/JUNE	0	0	0

Members			
RESULTS FOR 2018-2019			
QUARTER	MEMBER GROWTH NET GOAL	MEMBER GROWTH ACTUAL	DROPPED MEMBERS ACTUAL (including transfers)
JULY/AUG/SEPT	27	13	16
OCT/NOV/DEC	7	6	19
JAN/FEB/MAR	7	11	18
APR/MAY/JUNE	7	13	20

GOALS AND ACTUAL NEW CLUBS CUMULATIVE



GOALS AND ACTUAL MEMBERS CUMULATIVE



DROPPED CLUBS: 0	19 CLUBS OF 40 ADDED 1 OR MORE NEW MEMBERS	<u>GENDER DISTRIBUTION</u>	
DROPPED MEMBERS		MALE	737 (80.20%)
DECEASED	17	FEMALE	182 (19.80%)
CLUB CANCELLED	0	Women Percentage Fiscal Year Goal: 35%	
OTHER	56	TOTAL FAMILY UNIT MEMBERS	132
TOTAL	73	FAMILY MEMBERS PAYING HALF DUES	67

[CLICK HERE FOR CUMULATIVE MEMBERSHIP DATA](#)